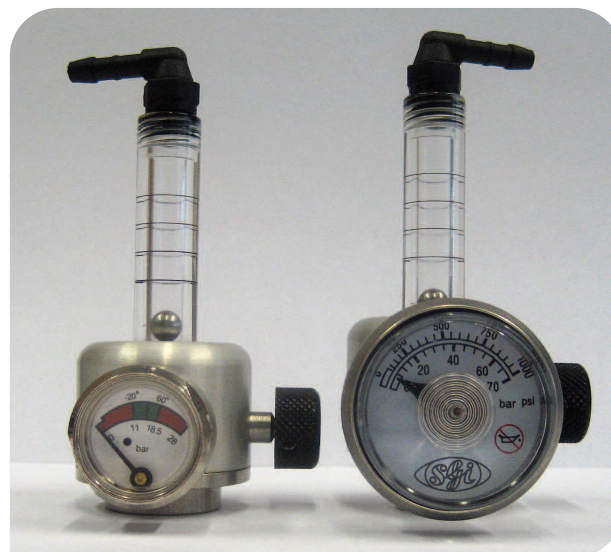


SPECIAL GASES AND MIXTURES

S-FLOW REGULATOR

KEY FEATURES AND BENEFITS

- Available in C10 and standard aerosol (7/16" x 28 NS/2) connections
- Compatible with CryoService 12, 34, 58 and 110 litre non-refillable cylinders
- Simple to use with precise adjustment of flow rate
- Integrated pressure gauge
- Robust construction



The S-Flow regulator is designed to provide precise setting of adjustable output flow rates from non-refillable gas cylinders. The S-Flow regulator has an integral flow adjustment valve and a clearly marked graduated flowmeter for ease of setting of the output flow rate. The standard flow range of the S-Flow regulator is 0-1 litre/minute.

The S-Flow regulator is available in two versions:

The SFLOW/F1 has an aerosol connection to suit CryoService 12 litre cylinders. It provides a greater range of flow adjustment and better precision of flow setting than possible with the standard MiniFlo valve.

The SFLOW/F2 has a C10 connection to suit 34/58/110 litre cylinders giving variable output flow rather than the normal fixed flow rate of standard regulators. It will also fit DOT approved 103 litre cylinders.

Both versions of the S-Flow regulator have an integral pressure gauge indicating the remaining contents of gas in the cylinder.

SPECIFICATION

Product Code:	SFLOW/F1 suitable for 12 litre cylinders SFLOW/F2 suitable for 34/58/110 litre cylinders
Body:	Aluminium bonnet, nickel plated brass base
Seats and Seals:	Nitrile
Flow Range:	0-1 litres/minute with graduations at 0.25, 0.5, 0.75 and 1.0 litres/minute