

SPECIAL GASES AND MIXTURES

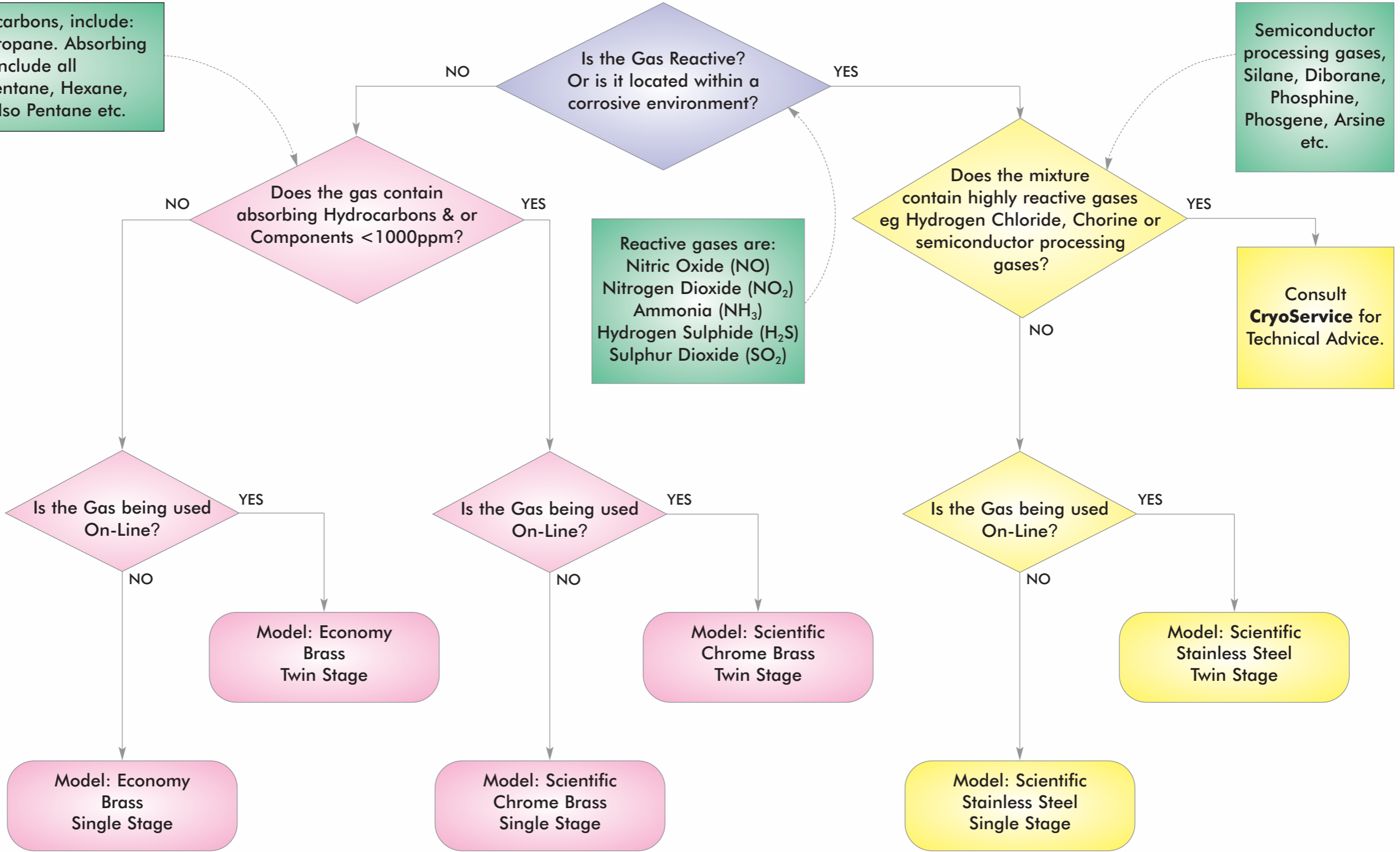
PRESSURE REGULATOR SELECTION CHART

Non-absorbing Hydrocarbons, include: Methane, Ethane and Propane. Absorbing Hydrocarbons include all others e.g. Butane, Pentane, Hexane, Butadiene, Benzene, Iso Pentane etc.

As important as the gas itself in ensuring accurate calibration is the equipment used to deliver it and this chart is designed to facilitate the optimum regulator selection.

Each regulator is supplied with an appropriate cylinder connection. CryoService standard conforms to BS341 and follows BCGA guidelines, hence typical connections are BS3, BS4, BS14 and BS15, although other standards, eg DIN, CGA, are available on request.

For each regulator model there is a choice of pressure output and outlet connection type.



Consider also the Dial-a-Flow as a light weight alternative to single and twin stage regulators particularly for field calibration applications due to its robustness and portability